

Using this guide - The Rankings

All entries stand out as being of particular national heritage interest but there are inevitably notable variations in terms of intactness and quality, hence the ranking system we have adopted.

★★★ Three Star pubs have stayed wholly or largely intact for the last fifty years, or retain particular rooms or features that are truly rare or exceptional, or display a combination of the two.

★★ Two Star pubs have interiors where the intactness and quality levels will be somewhat lower than for Three Star

★ The interiors of One Star pubs will have either readily identifiable historic layouts or retain rooms or features of special interest but more significant changes are allowable.

These online guides provide you with up-to-date descriptions, on a region by region basis, of pubs listed on our National Inventory of Historic Pub Interiors. Please note that the content will differ from that in the hard-copy guides where the pub information dates to when that guide was published. The hard-copy guides also contain more editorial material.

Contents

Introduction

Bedfordshire

Cambridgeshire

Essex

Hertfordshire

Norfolk

Suffolk

Closed Pubs

More to Try

Introduction

East Anglia as defined in this guide – Bedfordshire, Cambridgeshire, Essex, Hertfordshire, Norfolk and Suffolk – has some 5700 pubs. This guide covers the 63 pubs with interiors of national or regional historic or architectural importance plus a further 55 whose interiors are of some regional interest. These 118 pubs make up just 2% of the total.

Why is this figure so small? One reason, of course, is that pub interiors have always been subject to change. The only pubs which look now exactly as they did the day they opened are those which came into being very recently. However, the pace of change has certainly quickened. Most of our few remaining historic interiors evolved slowly over time and clung on to their most endearing features. Recent times have seen a mania for opening out, theming, image change and general trashing. As a result, many pubs suffer regular radical makeovers during which most, if not all, vestiges of original or old features disappear.

The irony is that interest in historic buildings has never been greater. Many of us are fascinated by our built heritage and spend many an hour visiting old properties from stately homes through to the most vernacular of structures. All the sadder, then, that genuine pub interiors seem so under-valued by mainstream conservationists and that owners are often eager to tear them apart.

The National Inventory

Defending our traditional pubs has always been a key aim of CAMRA. Work to compile a National Inventory of Historic Pub Interiors (NI) began in 1991 and the first actual list appeared in 1997, totalling 179 entries. It has since been continually refined and updated as, on the one hand, new candidates were discovered and, on the other, existing entries were closed or ruined. The total currently stands at over 250, of which just 12 are in East Anglia. There are two key criteria for inclusion. Firstly, the interior is largely unaltered since before 1945, though intact early post war pubs are also included (but are very rare). Secondly, the NI covers pubs with specific features or rooms of national significance. Our publication, Britain's Best Real Heritage Pubs, describes the entries

in some detail, as do the ‘long descriptions’ on the [Pub Heritage website](#).

The Regional Inventories

These were the next logical step. As would be expected, the bar for inclusion is set lower than for the NI though the same principles apply, with the emphasis on the internal fabric of the pub and what is authentically old within it. 43 pubs of this standard can be found in East Anglia.

A further category is pub interiors of Some Regional Interest. Although much altered, they will contain some historic features which may be of interest to visitors. 63 such pubs are briefly described in the guide.

Pubs in East Anglia

Many of our NI pubs are in the bigger cities and urban conurbations – London alone has 38 and Greater Manchester 25. Many of these are ornate Victorian treasures which, for obvious reasons, hardly ever existed in the smaller towns and cities of East Anglia. The region does, though, have more than a few old country pubs which will take you back to a quieter age whilst some town pubs have also resisted the unwanted attentions of the modernisers.

Traditionally, the rural pub was small, if not tiny, and run as a part-time enterprise. Across the country, the number of such simple businesses has declined dramatically because they just aren’t any longer an economic proposition. Increasingly, rural pubs depend on attracting a car-borne trade which demands food and this in turn has implications for the pub interiors.

However, some pubs have successfully met this challenge by extending their building in ways which don’t impact adversely on their historic core. Good examples are the Cock, Broom, Bedfordshire (where the additions at the back have been sensitively handled) and the Red Lion, Kenninghall, Norfolk, now quite a sizeable establishment, but with the old part still clearly recognisable.

Diminutive pubs where food offerings extend no further than crisps and where fittings are restricted to a few tables and chairs are, sadly, now all but extinct. The only true surviving example in the region is the wonderful Rose & Crown, Trowley Bottom, Hertfordshire – which is happily still going strong.

East Anglia had many coaching inns, many of which survive, albeit in vastly altered form. The Crown, Downham Market, Norfolk is probably the most intact example with the White Hart, St Ives, Cambridgeshire also giving a flavour of how these inns used to operate. Although too much altered inside to merit inclusion here, the Scole Inn, Norfolk also conveys something of the scale and importance of such places.

Moving into the towns and cities, we have little left from the Victorian and Edwardian eras. The Painters Arms, Luton, Bedfordshire is the best survivor from these times and was recently sympathetically refurbished (with real ale available for the first time in many years). A few others, like the Rose & Crown, Bury St Edmunds and the Woolpack, Ipswich, still have most of their original floorplan though fittings are generally later.

Arguably the most valuable interiors are those from the inter-war period. Top of the bill has to be the remarkable Margaret Catchpole, Ipswich, a wonderful example of the ‘improved public house.’ On a smaller scale, the Hand & Heart Peterborough is an untouched back street local of 1938 while Art Deco fans will

find much to enjoy at the Nags Head, Bishops Stortford despite recent knockings around.

Finally, the region has its fair share of 'picture book' pubs which at first glance look like the genuine article but on examination prove to be partly or largely recent confections. For instance, most of what you see at the Fighting Cocks, St Albans, one of many claimants to be the oldest pub in the country, is of no real age. Similarly, a legendary pub like the Bell at Stilton can't be included here because of the amount of internal mauling it has suffered. There are also some 'impressive fakes' such as the Compasses, Littley Green, Essex which looks like an unspoilt country pub but whose interior dates almost entirely from the early 1980s. For the genuine article, the Cock, Brent Eleigh, Suffolk cannot be beaten.

Do you know of other pubs to include?

Having said all that, if you come across a pub which isn't included in this guide but whose interior you feel deserves a mention, then please do get in touch (info@pubheritage.camra.org.uk).

Statutory Listing - A Short Guide

All parts of the United Kingdom have systems for protecting buildings of special architectural or historic interest. The process is devised not to prevent change but to manage it effectively, working with the grain of the building, not against it. Many of the pubs in this guide are statutorily listed and several have benefited from exemplary refurbishments or extensions where their listed status has ensured careful control. In turn, this has protected their futures as businesses, as without the changes, their viability might have been questionable.

In England, listings are made by the Secretary of State for Culture, Media and Sport, on the advice of English Heritage.

Grade 1. This highest of gradings covers just 2.5% of all listed buildings: these are those that have 'exceptional', even international interest.

Grade 11* (spoken of as 'Two Star'). Covers a further 5.5% of listed buildings. They have 'outstanding' interest.

Grade 11. 92% of all English listed buildings are at this grade. They have what is described as 'special' architectural or historic interest.

Most listed pubs are designated at Grade 11. The only 'Two Star' pubs in this guide are the marvellous Margaret Catchpole in Ipswich and the Green Dragon, Wymondham, Norfolk.

Bedfordshire

Broom

23 High Street, Broom, SG18 9NA

Tel: (01767) 314411

Email: nicksmith959@yahoo.co.uk

Website: <http://thecockinnbroom.com>

Real Ale & Cider: Real Ale and Real Cider

Listed Status: II

Cock ★★★

This splendid village local is one of only eight pubs in England retaining their historic total lack of a bar counter or hatch. It is also characteristic of the way thousands of village pubs may have begun, with just one small room in a private house, then expanding over the years.

The original drinking area was to the left of the front entrance and is now a games room, Drinks were fetched as, amazingly, they still are, from the top of the cellar steps in the room beyond. The right-hand front room opposite was once a shop, hence the cupboards either side of the fireplace. It has lots of panelling, full-height on the rear wall and two-thirds-height elsewhere. The entrance corridor also sports a highly decorative display of woodwork, whilst the rooms at the back have been developed over stages since 1977, but do not impact adversely on the historic area at the front. However, traditional as it may look, most of the panelling is the work of a local carpenter, Richard Beasley, as recently as about 1980.



Shop Room

Houghton Regis

East End, Houghton Regis, LU5 5LB

Tel: (01582) 864688

Listed Status: II

Luton

63 Bute Street, Luton, LU1 2EY

Tel: (01582) 729311

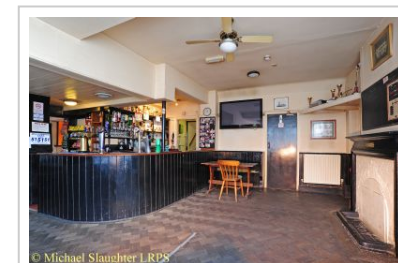
Real Ale & Cider: Real Ale and Real Cider

Public Transport: Near Railway Station (Luton)

Listed Status: II

Crown ★

Thatched 17th century pub retaining elements of a 1930s refit. The little altered public bar has a parquet floor, panelled ceiling on the left and a full height baffle / draught screen by the door. Also dating from the refit are the curved counter and the upper part of the bar-back with mirrored back and good columns holding up the shelves. Curved bench seating is attached to the dado panelling around the bay window with more either side of the counter: also a brick fireplace painted cream and 'Gentlemen' sign on the door which both look to be inter-war. The lounge has an interesting ceiling and a brick fireplace, whose inlaying with bottles suggests a 1950s/60s date. Elsewhere in here and in the back room there is little of period interest.



Right Hand Bar

Great Northern ★★

The term “little gem” has become something of a cliché but springs immediately to mind on entering this tiny one-bar pub. You enter by the left-hand door which originally led to an off sales but the partition was removed many years ago and the former main entrance, the right-hand door, put out of use. Green-tiled wainscoting with a tulip relief adorns all the walls and the ornate cast iron roof pillar with a leaf decoration is a notable feature. The mirrored bar back, with slender columns holding up the shelves, is genuinely old; the canted-fronted bar counter and brick fireplace are both inter-war. The domino table at the front of the room is a rare feature. Most of the external patterned glass has been replaced, presumably because of breakages, but all the original glazing bars (some curved) survive. However, at the back of the room is an exterior-looking etched window, beyond which was what was a lounge but is now a smoking area.



Public Bar

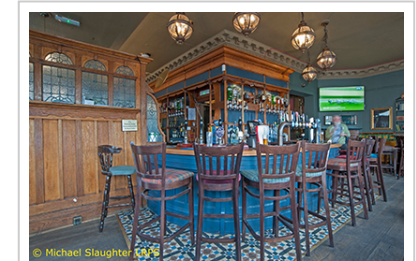
Luton

79 High Town Road, Luton, LU2 0BW
Tel: (01582) 732815
Email: info@paintersarms.co.uk
Website: <https://www.paintersarms.co.uk>
Real Ale & Cider: Real Ale
Public Transport: Near Railway Station (Luton)
Listed Status: II

Painters Arms ★★

Rebuilt in 1913 with an interesting green-glazed brick frontage, the Painters retains much of its original compartmentalised plan and superb internal tiling. On entering, there is a small snug with 'Jug Bar' etched in the door glass indicating its original function as an off-sales: sadly the seats running down each side, no doubt used by customers having a swift one before leaving with their take-aways, has been ripped out in recent years. The front and right-hand rooms have their original bar-backs and counters.

To the left, two small rooms were combined many years ago but you can still see 'Saloon' and 'Private Bar' etched in the door window glass. Lovely tiling is to be found in both the entrance lobby floors and the dados of some internal walls. Three original fireplaces also survive. In the bar to left of the Jug Bar, the counter has a pot shelf which is a relatively modern addition, but carefully created to include Art Nouveau-style glazing harmonising with that in the original partitions. A wall at the back was removed in 2000 and a door widened, so now it is possible to circumnavigate the interior.



Main Bar

Totternhoe

Castle Hill Road, Totternhoe, LU6 2DA
Tel: (01525) 220434
Email: info@thecrosskeys.pub
Website: <https://www.thecrosskeys.pub/>
Real Ale & Cider: Real Ale
Public Transport: Near Bus Stop
Listed Status: II

Cross Keys ★

A 17th century timber framed thatched pub with two small bars which was last refurbished in the 1950s. In the small left hand bar are a 1950s-style counter and a bar-back that mixes 1950s and more recent work. The beams are replacements following a fire in 2004, hence why the insurance company prohibits use of the old fireplace. The tiled floor looks to be post-war. Through an opening (door removed), another small bar has an old quarry tiled floor and a 1950s counter with a recent wood top replacement of a copper one. Period doors lead to both the gents and cellar, the latter being notably low.



Left Hand Bar

Totternhoe

16 Church Road, Totternhoe, LU6 1RE
Tel: (01582) 674053
Email: theoldfarminntotternhoe@gmail.com
Website: <https://www.olfarmpub.com/>
Real Ale & Cider: Real Ale and Real Cider
Public Transport: Near Bus Stop
Listed Status: II

Old Farm Inn ★

Formerly a farm building, most of what you now see dates from the 1950s when the extension on the right was added and the front bar extended into a former living room. This bar retains fittings from the time of the alterations, notably the counter and bar-back; some of the panelling and the inglenook fireplace are much older. There's an even better inglenook fireplace, with a copper hood, in the back lounge. The small counter is also from the 1950s though the bar-back combines old and new. The presence of another fireplace at the back indicates that this space was once two rooms.



Front Bar

Cambridgeshire

Cambridge

68 King Street, Cambridge, CB1 1LN

Tel: (01223) 351464

Email: champthames@gmail.com

Website: <https://thechampionofthethames.com/>

Real Ale & Cider: Real Ale

Public Transport: Near Bus Stop

Listed Status: II

Eaton Socon

103 Great North Road, Eaton Socon, PE19 8EL

Tel: (01480) 470853

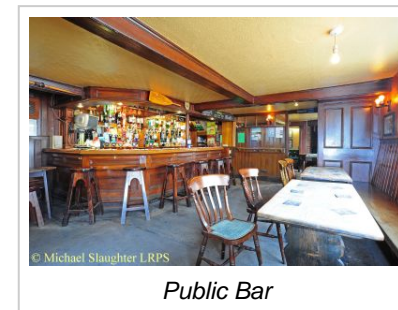
Real Ale & Cider: Real Ale

Public Transport: Near Bus Stop

Listed Status: II

Champion of the Thames ★★

One of the last remaining traditional pubs in the city centre, the “Champ” retains, largely unaltered, its late 19th century interior. Both small bars are wood-panelled with Victorian counters and bar backs, fixed benches (with modern leather upholstery in the right hand bar) and rare part glazed partition wall between the two rooms. On the right a former fireplace has been converted into a tiny seating alcove. The etched windows, showing the Champion in action, are marvellous but not original having been smashed and replaced a number of times (the pub lies on the notorious “King Street Run”) but the 'Public Bar' one is old. The characterful but frankly disgusting outside loos were replaced several years ago by more civilized indoor arrangements.



Public Bar

White Horse ★

The oldest features in this early 18th century Great North Road coaching inn are in the right hand area - fine curved high-back settle, part-glazed partition wall and inglenook fireplace. The layout has seen much alteration over the years and the rear extensions are recent.



Right Hand Room

Grantchester

57 Broadway, Grantchester, CB3 9NQ

Tel: (01223) 846004

Email: info@blueballgrantchester.co.uk

Website: <http://www.blueballgrantchester.co.uk>

Real Ale & Cider: Real Ale

Public Transport: Near Bus Stop

Listed Status: Not listed

Little Gransden

71 Main Road, Little Gransden, SG19 3DW

Tel: (01767) 677348

Email: bob@sonofsid.co.uk

Website: <http://www.chequersgransden.co.uk>

Real Ale & Cider: Real Ale and Real Cider

Public Transport: Near Bus Stop

Listed Status: Not listed

Blue Ball Inn ★★

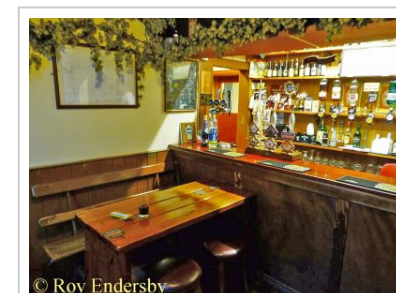
The Blue Ball (whose name commemorates a balloon flight) is a small village local rebuilt in 1893. The two-bar layout is intact although the internal door has been removed. The quarter circle bar counter and bar back appear to be of pre-wardate as does the panelling with bench seating in the tiny bar on the right, which is on a slightly higher level. In the bar on the left is the rare pub game of Ringing The Bull - see if you can swing the metal ring and get it to land on the hook on the wall.



Left Hand Bar

Chequers ★

A village pub with three small rooms, the middle and right hand ones having barely changed in over 50 years. Rebuilt after a fire in the late 19th century, it originally consisted of the two left hand rooms with the right room added in the rebuild. Up to around 1960, the left hand room contained a bar counter in the front right hand part - there are markings on the ceiling and wall to confirm this. The middle room, with its red and black quarry-tiled floor, old dado panelling and basic bare bench was the tap room, the counter being added in the 1960s. The same applied in the right hand room which also has old dado panelling and a 1970s fireplace.



Snug

Newton

Fowlmere Road, Newton, CB22 7PG

Tel: (01223) 870436

Email: contact@queensheadnewton.co.uk

Website: <https://www.queensheadnewton.co.uk/>

Real Ale & Cider: Real Ale and Real Cider

Public Transport: Near Bus Stop

Listed Status: II

Queen's Head ★★★

A pub since 1729 and run on very traditional lines, this family-owned gem retains a splendid, unspoiled public bar along with, in the Saloon, a rare surviving example of 1960s pub re-fitting.

From the front door, a short passage leads to the 'Jug And Bottle' hatch, still with its two windows and bell push. To the right is the splendid traditional quarry tiled public bar which retains old dado panelling with bare bench seating, old wood surround fireplace and a splendid curved high-backed settle. The counter was added in post war times and behind it is a stillage containing casks of Adnams beers. To the left of the passage is the Saloon or lounge bar which was formerly two small rooms and which contains two classic forms of pub re-fitting used in the early 1960s, few examples of which still remain - a bar counter of brick with old bottles set into it; and wood added to the walls to give it a Mock-Tudor effect. The toilets and games room were added in 1963.



Public Bar

Peterborough

12 Highbury Street, Peterborough, PE1 3BE

Tel: (01733) 564653

Real Ale & Cider: Real Ale and Real Cider

Public Transport: Near Railway Station (Peterborough) and Bus Stop

Listed Status: Not listed

Hand & Heart ★★★

An incredibly rare survivor situated in a small terrace, the Hand & Heart is a small, purpose-rebuilt pub dating from 1938 and is essentially intact and unaltered.

The front door on the left leads to a small lobby then, beyond an internal door in a full-height glazed screen, is a modest drinking lobby facing the original off-sales with a bell-push and glazed screen to the servery. At the front on the right is the basic public bar, which retains the original bar counter (with distinctive Moderne-style frontage), bar-back and fixed seating. Note the Second World War memorial on the wall by the door, one of just 60 such memorials in pubs. At the back of the pub is a smoke room with original seating and a hatch to the servery. The fireplace is a Victorian-style replacement, sadly inappropriate for a 1930s pub.



Public Bar

Essex

Aveley

58 High Street, Aveley, RM15 4AD

Directions: Near B1335 & A1306

Tel: 07976 264053

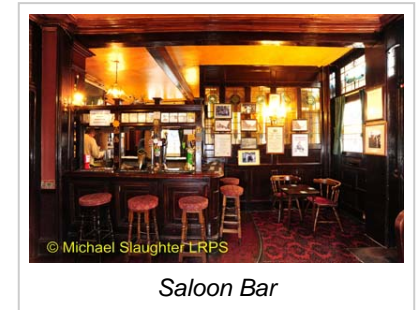
Real Ale & Cider: Real Ale

Public Transport: Near Bus Stop

Listed Status: Not listed

Old Ship Inn ★★★

The unassuming rendered exterior conceals a four-room pub, the arrangements of which date from the early twentieth century: The stained glass windows are particularly attractive. The left-hand saloon bar incorporates a former off-sales compartment (hence the disused external door) and is separated from the street-corner private bar by a full-height screen. In the saloon the Victorian-style fireplace is a possible later addition but, on the bar counter, are remains of the shutters, now converted to a pot shelf. The private bar has an old bench, still with its maker's label. In the public bar the counter, with its porthole decoration, looks as though it was given something of a nautical makeover in the 1960s when such themed fitting out was popular. The fourth (pool) room has a timber screen to the corridor with glazing at the top to provide borrowed light: it has a fairly impressive inter-war style brick fireplace of around 1930.



Saloon Bar

Broads Green

, Broads Green, CM3 1DT

Tel: (01245) 360222

Real Ale & Cider: Real Ale and Real Cider

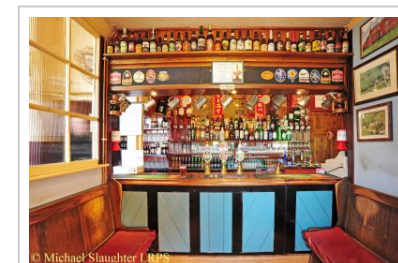
Public Transport: Near Bus Stop

Listed Status: Not listed

Walnut Tree ★★★

One of the least spoilt pub interiors in Essex, the star features here are the simple but endearing public bar and the snug formed out of the former off-sales.

Overlooking the village green, the Walnut Tree was built in 1888, according to the datestone high up on the right. The original pub comprised the two rooms on the left - public bar and former bottle and jug, now a snug. Both are little altered. The front door leads you into the delightful snug, squeezed between the two other bars. It has a parquet floor, Victorian bar counter, a bar-back consisting of old shelves on a mirrored back and just two small benches by way of furniture. A part-glazed partition separates it from the no-nonsense public bar with its original full-height panelling and attached bench seating. The bar counter was added in 1962 (there was none previously) and the fireplace, despite looking earlier, is from the 1980s. The front part of the saloon bar was formerly the landlord's private parlour; it came into pub use in 1962 and was later extended.



Snug

Burnham-on-Crouch

The Quay, Burnham-on-Crouch, CM0 8AS

Tel: (01621) 782106

Website: <http://www.whiteharteburnham.co.uk>

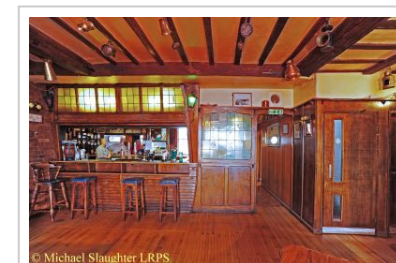
Real Ale & Cider: Real Ale

Public Transport: Near Bus Stop

Listed Status: II

Olde White Harte Hotel ★★

An 18th-century red-brick building on the quayside alongside the River Crouch with its own jetty and water's edge seating area. In 1957 it was refitted based on a ship theme and has three rooms around a central servery which are barely changed since. The front bar with river views has a wood-block floor, a distinctive bar counter of narrow lapped wood strips with four oblong 'box-shaped' areas at the top and a leaded screen with coloured glass panels above and to the right. Through a Tudor arch-shaped doorway is the small side bar with a similar counter, a wall with late 1950s ply panels and another wood block floor. The rear bar through another Tudor arch doorway has a small bar counter more like a hatch with plain 1950s panelling, another wood block floor, a 1950s brick fireplace, good quality fixed seating and an old tongue and groove panelled dado. The dining room was until recently the residents' lounge.



Front Bar

Castle Hedingham

10 St.James Street, Castle Hedingham, CO9 3EJ

Directions: on main road through village.

Tel: (01787) 460350

Email: bell-castle@hotmail.co.uk

Website: <http://www.hedinghambell.co.uk>

Real Ale & Cider: Real Ale

Public Transport: Near Bus Stop

Listed Status: II

Colchester

28 Mersea Road, Colchester, CO2 7ET

Tel: 07976 985083

Real Ale & Cider: Real Ale and Real Cider

Public Transport: Near Railway Station (Colchester Town) and Bus Stop

Listed Status: Not listed

Bell ★★

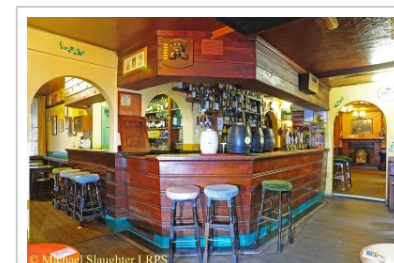
This former coaching inn occupies a timber-framed 16th-century building and has an unusual layout of four rooms linked by a corridor running from the front door. Much of what you now see dates from changes in 1967, before which the main entrance was in the middle of the frontage, accessing an off-licence and rooms each side (the current public bar and saloon). Both these rooms are simply appointed with slatted-wood counters and basic bar-back shelving. The public bar has some old panelling and ale is served from barrels stillaged behind the counter. The room on the left of the corridor only entered pub use in 1980; a glass-fronted section of wall displays the underlying wattle and daub construction. There is also a small back room of fairly recent vintage. On the first floor, but accessed from outside, is a magnificent assembly room built around 1790 and refurbished in 1980; the superb moulding on the barrel ceiling is a plaster replica of the papier-mache original.

Odd One Out ★★

Since this terraced property became a pub in 1935, the fittings and layout have not greatly changed. To the left is a bar with bare-boarded floor, solid 1930s counter, bar back with bevelled mirror panels, brick fireplace and bench seating; note the glass snack display case on the bar. To the rear left is a small room with similar features. The high-level shelving over the counters is modern. The wall dividing these rooms was reinstated by the present landlord. On the right, another small bar retains its 1930s fittings, as does the little-used room at the back. These two rooms used to be accessed from a side door but a connecting internal doorway was installed in 1983.



Public Bar



Left Hand Bar

Goldhanger

11 Church Street, Goldhanger, CM9 8AS

Tel: (01621) 788203

Website: <http://thechequersgoldhanger.co.uk>

Real Ale & Cider: Real Ale and Real Cider

Public Transport: Near Bus Stop

Listed Status: II

Chequers ★

A 16th-/17th-century pub which in Victorian times comprised the little-changed public bar and tap room plus the wide red and black quarry-tiled passageway running from the front door. Both tap room and public bar have Victorian bar counters. The public bar has a splendid fitted settle forming a partition on the passageway side; it has some windows at the top and bench seating attached. Partitions like this existed in great numbers in pubs throughout the country but are now very rare. This small room has an old brick fireplace, old dado panelling with benches attached and a part tongue-and-groove ceiling. The large rear bar came into use during the inter-war years - the counter is one of the lowest in the country! The other two rooms were residential accommodation before becoming public areas.



Screen

Harlow

1 Ward Hatch, Harlow, CM20 2NB

Directions: On Mowbray Road Opp Tanys Dell School

Tel: (01279) 424839

Real Ale & Cider: Real Ale

Public Transport: Near Bus Stop

Listed Status: Not listed

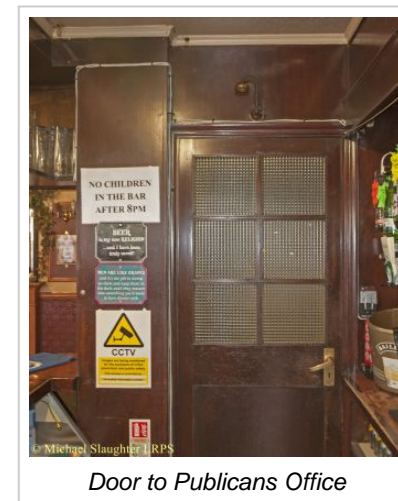
White Admiral ★

Built in 1953 as the second pub in Harlow New Town and also one of the earliest new-build post-war pubs in the country; it remains remarkably intact

Left of the entrance, the public bar (formerly saloon) has its original counter (with later moulding on the front) and a slightly-modernised bar-back. The tiled fireplace is a replacement and the fixed seating is modern. The room has been extended at the back into what was a separate small room whose original purpose is unclear (games?).

The saloon (formerly public) on the right also has an original counter with new frontage plus a little-altered bar-back. The panelled dado and curved panelling above the sides of the counter are very 'fifties'.

The off-sales survives on The Chantry side but is now used for storage.



Mill Green

Mill Green Road, Mill Green, CM4 0PT

Tel: (01277) 352010

Email: info@thevipermillgreen.co.uk

Website: <https://www.thevipermillgreen.co.uk>

Real Ale & Cider: Real Ale and Real Cider

Public Transport: Near Railway Station (Ingatstone) and Bus Stop

Listed Status: II

Pleshey

The Street, Pleshey, CM3 1HG

Email: theleatherbottle.pleshey@gmail.com

Real Ale & Cider: Real Ale

Public Transport: Near Bus Stop

Listed Status: II

Viper ★★★

UPDATE 2023 After a significant period of closure and a major refurbishment, the pub recently reopened. Initial reports indicate that a very good job has been done with the key historic features all retained.

A delightful secluded pub set amidst extensive woodland. Two doors face you. That on the left leads to the tap room which is really the star attraction. It is a small space with seating round three sides near the window, a hatch to the servery, and, what appear to be refitting from around 1930, a parquet floor and brick fireplace. Set in the bench seating is a hole and associated drawer for the now-rare game of pitch penny. Left of this space is a much more recent public bar with a modern counter. The second outside door leads into what is called a private bar, although this is a rather big space and became linked in post-war times to an area on the far right. A panelled bar counter serves both spaces. The front window on the far right replaced a door which was closed following subsidence after a hot, dry 1970s summer.

Leather Bottle ★

Worth a look for the basic public bar with its painted wood-panelling, traditional bench seating and, on the left, a low, bowed panelled ceiling. The room was clearly extended to the right at some point.



Tap Room



Public Bar Left Hand Side

Rochford

42 North Street, Rochford, SS4 1AB

Tel: None

Email: theroseandcrownrochford@hotmail.co.uk

Real Ale & Cider: Real Ale and Real Cider

Public Transport: Near Railway Station (Rochford) and Bus Stop

Listed Status: Not listed

Tolleshunt D'Arcy

15 North Street, Tolleshunt D'Arcy, CM9 8TF

Tel: (01621) 860262

Real Ale & Cider: Real Ale

Public Transport: Near Bus Stop

Listed Status: Not listed

Rose & Crown ★

In the public bar, the counter and bar-back fittings are both inter-war though they have been reduced in length somewhat. The saloon also has its original panelled counter (with later top) and the lower part of the bar-back could also be original. Some old panelling survives, as does the parquet floor. The wall between this room and one on the far left has been removed.

Queen's Head ★

The 'Bar Parlour' here is a rare example of a country pub public bar hardly altered in 100 years. The door to the left of the etched and frosted bay window leads into a splendid little room retaining an old counter and bar back shelves, full height tongue-and-groove panelling with bare benches attached and two old scrubbed tables. The flagstone floor was fitted in the 1970s on top of the original brick floor. The brick fireplace is of no great age. Elsewhere, the lounge has a good carved wood fireplace but the other fittings are modern. A former club room is now the small area where the dining room starts.



Left Hand Bar



Bar Parlour

Hertfordshire

Buntingford

17 High Street, Buntingford, SG9 9AB

Tel: (01763) 271422

Real Ale & Cider: Real Ale

Public Transport: Near Bus Stop

Listed Status: II

Bushey

25 Park Road, Bushey, WD23 3EE

Tel: (020) 8950 2256

Real Ale & Cider: Real Ale

Public Transport: Near Railway Station (Bushey) and Bus Stop

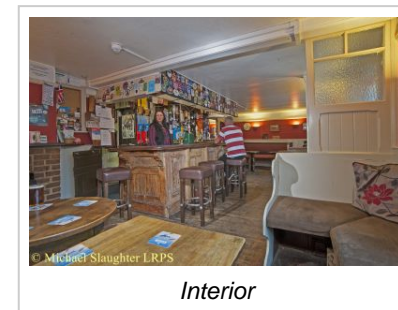
Listed Status: Not listed

Crown ★

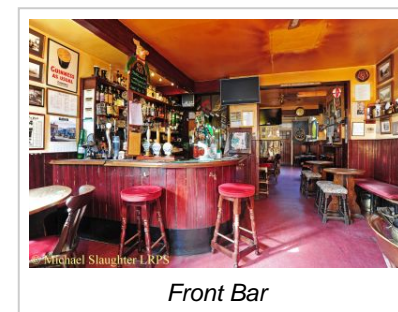
A small mid-19th century town centre drinkers pub. The front doors have etched panels - one has 'Ale And Spirit Bar' on it - and lead to a public bar with a genuine old bar back and a counter, which in 1990 was moved back about a foot as the markings on the ceiling confirm. Prior to the 1960s two short partitions formed a 'jug and bottle' with a small snug on the left and the public bar on the right. Some old dado panelling and part of the original seating can be seen on the left. At the rear up a slope is a small lounge which was a private living room until 1990 when a counter was added. A further room occupies a separate weather-boarded building at the rear. Gents haircuts are available by appointment!

Swan ★

A relatively unspoilt Victorian back street local where the off-sales has been absorbed but which might otherwise always have been just one room. Many of the fittings - bar counter, doors, windows, wall-panelling - are, if not original, pretty old. Inside gents but outside ladies!



Interior



Front Bar

Flaunden

Flaunden Hill, Flaunden, HP3 0PP

Directions: From the main road through the village, follow the signs towards Latimer

Tel: (01442) 832020

Email: info@greendragonflaunden.co.uk

Website: <http://www.greendragonflaunden.co.uk>

Real Ale & Cider: Real Ale and Real Cider

Listed Status: II

Harpenden

39 High Street, Harpenden, AL5 2SD

Directions: Opp War Memorial

Tel: (01582) 763989

Real Ale & Cider: Real Ale

Public Transport: Near Railway Station (Harpenden) and Bus Stop

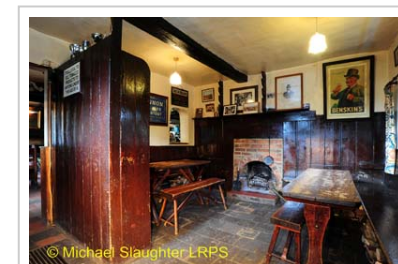
Listed Status: II

Green Dragon ★★

Most of this country pub consists of modernisations and extensions introduced between 1976 and 1980 but to the right of the main entrance is a gloriously simple rustic snug retaining its quarry-tiled floor, fixed bench seating and a baffle by the door. Thousands of such basic pub rooms existed until not that long ago, but now only a handful are still with us. Above the fireplace is a gun-rest for three guns, no doubt put to good use by those about to go to or returning from a shoot around this once remote Chilterns village. The rather crude hatch cut to the servery is an unfortunate recent feature, as is the brick infill to the fireplace.

Cross Keys ★★

A pub since at least 1731 but notable for the virtually-intact design scheme superimposed in the 1950s. Various 'olde worlde' features were introduced such as brick fireplaces with medieval overtones, leaded windows and bench seats. The bar on the right has a fine flag-stoned floor and oak beams pre-dating the make-over. The pewter top on the semi-circular bar (with pewter handpump base as well) is one of only half a dozen in the country. The counter itself has old studded timber dividers infilled with (modern) brown tiles. Note the brass inlaid cross keys on the floor as you enter - also from the make-over. The left hand lounge has a quarter-circle wooden counter with brick infill and red Formica top. The glass fronted display cases may once have been used to store bottles of spirits



Snug



Bar

Hatfield

21 Park Street, Hatfield, AL9 5AT

Tel: (01707) 264765

Website: <https://www.horseandgroom-oldhatfield.com>

Real Ale & Cider: Real Ale and Real Cider

Public Transport: Near Railway Station (Hatfield (Hertfordshire)) and Bus Stop

Listed Status: II

Hertford

29 Railway Place, Hertford, SG13 7BS

Tel: (01992) 582048

Website: <https://www.mcmullens.co.uk/great-eastern-tavern>

Real Ale & Cider: Real Ale

Public Transport: Near Railway Station (Hertford East)

Listed Status: II

Hertford

33 Castle Street, Hertford, SG14 1HH

Tel: 07803 878821

Website: <https://www.white-horse-hertford.co.uk>

Real Ale & Cider: Real Ale

Public Transport: Near Railway Station (Hertford East) and Bus Stop

Listed Status: II

Horse & Groom ★

Dating back to 1806 and with a low, timbered interior, this pub is mainly of interest for the splendid snug right of the entrance. Created by an old medium-height curved settle, it has a flagstone floor, lovely inglenook fireplace (now occupied by a stove) and wall-bench seating on one side. The settle was repositioned many years ago at the same time that the rest of the layout was opened out.



Great Eastern Tavern ★

Built as a railway hotel in 1843 and not greatly changed since a 1940s refurbishment. The saloon on the left has a fielded panelled dado and old fixed seating around the bay windows. The counter and bar-back are from the refurbishment (the former with panels attached in the 1970s), as is the brick fireplace. On the right is the 'Tap' with a sloping 1940s counter and a bar-back probably from the same period, two more brick fireplaces, fixed seating and panelled dado. This room was extended backwards in 1982/83 and all the panelling likely dates from that time.

White Horse ★

Probably a seventeenth century building, this was a pub by 1838. Until the late 1970s, it was a single bar enterprise, the original being the left hand one with bare wood flooring and old fireplace and wall panelling; the counter and bar-back are difficult to date but may not be that old. The right hand bar, with a fine fireplace, is an opening-up into the former residential space whilst the incorporation of parts of the upper floor into the public area is quite recent (but very characterful).



Ley Green

Plough Lane, Ley Green, SG4 8LA

Directions: Although Ley Green is a small hamlet the pub can be difficult to find. There are brown 'Pub' signs at each end of Plough Lane. The T jct to look for has a phone box and wooden bus stop, turn here and it's 200mtrs. It is best to take a map and if all else fails ask a friendly local.

Tel: 07989 323929

Website: <https://www.theploughkingswalden.com>

Real Ale & Cider: Real Ale

Public Transport: Near Bus Stop

Listed Status: II

St. Albans

32-34 Lower Dagnall Street, St. Albans, AL3 4PT

Directions: Off A5183 Verulam Road

Tel: (01727) 569275

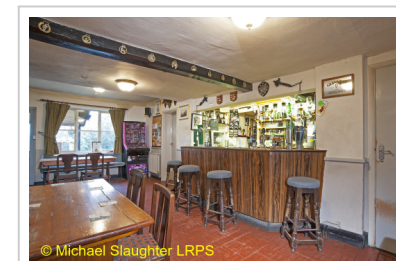
Real Ale & Cider: Real Ale

Public Transport: Near Railway Station (St Albans City)

Listed Status: Not listed

Plough ★

Tucked-away country local still with two rooms and an off-sales. The bar on the left has an old bar back and some 1960s fittings while the only aged features in the tiny saloon are the dado panelling and fireplace.



Public Bar

Farriers Arms ★★

A two-bar locals pub, little changed since the early 1960s. The disused doors to the lower bar indicate it was once split into bar, snug and off-sales. It now has a wooden floor, distinctive post-war bar counter and bar back and a brick fireplace of the same vintage. The light wood dado with attached benches is older. A sliding door leads into the upper bar which has an inter-war bar counter, an Art Deco fireplace and old dado panelling with benches attached. Note the plaque proclaiming that the first-ever CAMRA Branch meeting was held here in 1972.



Public Bar

St. Albans

23-25 Holywell Hill, St. Albans, AL1 1EZ

Tel: (01727) 853624

Email: whiteharthotel@msn.com

Website: <https://www.whiteharthotelstalbens.co.uk>

Real Ale & Cider: Real Ale

Public Transport: Near Railway Station (St Albans Abbey) and Bus Stop

Listed Status: II*

Trowley Bottom

Trowley Bottom near Flamstead, Trowley Bottom, AL3 8DP

Tel: (01582) 840564

Real Ale & Cider: Real Ale

Public Transport: Near Bus Stop

Listed Status: II

White Hart Hotel ★★

This late-15th century inn has suffered few changes since 'restoration' in 1935. In the two small bars, the counters and shelves attached to a part-stained and leaded partition within the servery are from that time but some modern shelves have been added. The panelling both here and in the room behind which doubles as the hotel reception also looks like 1930s work. Originally there were doors to the reception area at the rear of both bars but now there is a wide opening on the right hand side. The oak panelled walls in the two-part dining room at the back are considerably older, as is the large brick fireplace.



Right Hand Bar

Rose & Crown ★★★

A gem of a small village pub which, in the late 1950s or early 1960s, was refitted in a simple but elegant style and whose sheer minuteness makes it a significant survival.

The Rose & Crown has two rooms, a cosy public bar and an even smaller lounge (the door between them has been removed). The lack of recent changes is no doubt largely due to long-serving landlady Mrs Judy Wilding who died in 2016 aged 95. The counters – straight in the bar, a quadrant in the lounge – both have plain vertical boarding and there is also a good deal of veneered wall panelling. It's the kind of pub where you are inevitably drawn into friendly conversation.



Right Hand Bar

Norfolk

Alpington

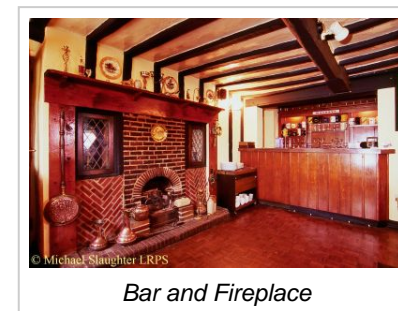
Wheel Road, Alpington, NR14 7NL
Tel: (01508) 492712
Email: info@thewheelalpington.co.uk
Website: <https://www.thewheelalpington.co.uk>
Real Ale & Cider: Real Ale
Public Transport: Near Bus Stop
Listed Status: Not listed

Blakeney

Westgate Street, Blakeney, NR25 7NQ
Tel: (01263) 740341
Website: <https://www.kingsarmsblakeney.co.uk>
Real Ale & Cider: Real Ale
Public Transport: Near Bus Stop
Listed Status: II

Wheel of Fortune ★

Here we have perhaps the last pub in Norfolk where you can see significant remains of a Watneys 1960s refit - notably the bar backs in the snug and left-hand bar. The former in particular is classic Watneys of the kind that once featured in hundreds of this unmissed brewery's pubs; it also has a rare surviving till drawer. The display cases and counter in the snug are from the same era, as could well be the seating in the bar - though this room was later extended into the one next door. A no longer operational wheel for the Norfolk game of Twister hangs from the ceiling.



Kings Arms ★

Originally three fisherman's cottages, the Kings Head now sports several rooms but the original layout featured just two, plus an off-sales. A wall plaque records the 1953 flood level and the bar fittings, including the lapped wood counters and red Formica-covered bar-back shelves, date from the subsequent refit. The public bar has a red quarry-tiled floor, an exposed flint wall and an old but repaired fireplace - the dado panelling and long benches are much older. Similar panelling adorns the Lounge which was combined many years ago with another small room to the far right with a 1950s fireplace. Two further rooms to the left entered pub use in the 1980s and the 'Garden Room' is even more recent.



Blickling

Blickling Road Blickling Near, Norwich NR11 6NF, Blickling, NR11 6NF

Directions: Next to Blickling Hall

Tel: (01263) 732133

Email: contact@bucksarms.co.uk

Website: <https://www.bucksarms.co.uk/>

Real Ale & Cider: Real Ale

Listed Status: II

Burnham Thorpe

Walsingham Road, Burnham Thorpe, PE31 8HL

Directions: Off B1355

Tel: (01328) 854988

Email: thelordnelson@woodfordes.com

Website: <https://www.nelsonslocal.com>

Real Ale & Cider: Real Ale

Listed Status: II

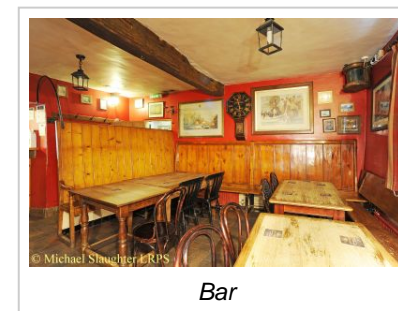
Bucks Arms ★

This early 18th-century brick building is now part of the Blickling Hall estate. The snug, tucked between the main corridor and lounge, is the star here. It has a white-painted counter probably from the 1950s, old bar-back shelves, a 1950s brick fireplace with an ornate surround and an oddly shaped alcove. The counter in the lounge is of similar vintage; the fireplace and fixed seating are old but the bar-back modern. The rooms are linked by a Norfolk pamment corridor and entrance lobby. The two-part dining room with its quarry-tiled floor and fine old fireplaces was not part of the pub until recent years. The pub was once managed by the People's Refreshment House Association, founded in 1896 to encourage temperance in inns by serving non-alcoholic beverages.



Lord Nelson ★

Named after the great admiral, born in the village, the Lord Nelson has seen much change in recent years, with a big extension at the back being the most recent development. Happily, the historic core, though altered, retains much of its age-old atmosphere. An uneven brick-floored passage leads to, on the left, the Nelson's Bar. The pub originally had no bar counter and drinks were brought from the cellar on a tray but, in 2002, a hole was cut in a wall to create a small counter to a new servery behind. At the same time, one of two ancient high-backed settles, attached to the ceiling with a curved iron rod, was removed. However, as part of further alterations in 2020, a replica of this settle was installed to accompany the splendid larger one. The original tiled floor was also replaced. To the right of the passage, the Ward Room once contained many items of Nelson memorabilia. The small snug to the left of the bar was once a cellar and the large room to the right was converted from a barn in 1996.



Cromer

Brook Street, Cromer, NR27 9HD

Directions: South of Church on cliff top

Tel: (01263) 514964

Email: info@redlion-cromer.co.uk

Website: <https://redlion-cromer.co.uk>

Real Ale & Cider: Real Ale and Real Cider

Public Transport: Near Railway Station (Cromer) and Bus Stop

Listed Status: Not listed

Downham Market

12 Bridge Street, Downham Market, PE38 9DH

Tel: (01366) 382322

Email: contact@crowncoachinginn.com

Website: <http://www.crowncoachinginn.com/>

Real Ale & Cider: Real Ale

Public Transport: Near Railway Station (Downham Market) and Bus Stop

Listed Status: II

Red Lion Hotel ★

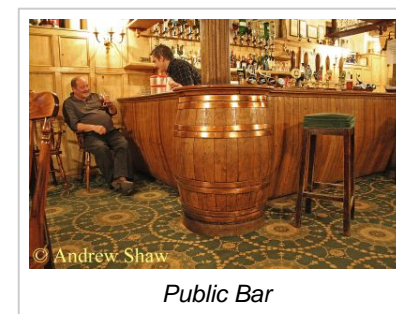
A Victorian hotel overlooking the sea. The main bare-boarded bar on the right retains many original fittings but suffered major changes in the 1980s. The Victorian vestibule entrance on the far right has two doors, one of which served a now-removed snug separated by a wood and glass partition. It would also appear that an off sales near the servery has been amalgamated. The counter is definitely Victorian but the mirrored bar-back has some modern additions. Wide openings lead to a second room which also has an old counter and 1930s brick fireplace, this one with a non-working bell-push next to it. This room has a good Victorian colourful tiled floor but the counter is modern and this part of the pub was opened up in the mid 1980s. The dining room across the corridor has an excellent 1930s fireplace. The panelling around the reception area dates only from c.1985.

Crown Hotel ★

A 17th-century coaching inn with a notable jettied area running to the rear. Before the 1950s, the main bar was actually three small rooms - an extensive refit included installation of wall panelling rescued from the now-demolished Didlington Hall. The large fireplace is genuinely ancient and a smaller curved one was added. The bar counter, made from old wooden barrels, is also from this period. A cabinet once served as a bar back but was replaced by new shelves in the late 1980s. One further change was the removal of the dark stain from the panelling to satisfy the vogue for lighter shades. Other rooms comprise a small dining room, a function room with vaulted ceiling, a modern bar which replaced one from the 1960s and, at the back, a Stable Restaurant.



Servery



Public Bar

Gorleston

67 Church Road, Gorleston, NR31 6LR

Tel: (01493) 665937

Real Ale & Cider: Real Ale

Listed Status: Not listed

Great Yarmouth

43 Beatty Road, Great Yarmouth, NR30 4BW

Tel: (01493) 843220

Website: <http://theavenuepub.uk/>

Real Ale & Cider: Real Ale

Public Transport: Near Bus Stop

Listed Status: Not listed

Kevill Arms ★

The public bar in this 1926-built Lacons house is little changed beyond absorption of the off-sales. The counter is original, albeit reduced in size and re-positioned. Other features are fine fielded panelling all round, fixed seating and a good fireplace. The original door, with stained-glass window above, is now out of use after a new internal door was created next to the fireplace. The lounge also has some 1926 fittings but was extended into the former cellar in 1987. The Dining Room was converted from former living accommodation.



Bar

Avenue ★

Built by Lacons in 1929, this Mock Tudor pub has much of period interest. The public bar has absorbed the off-sales but retains many original fittings including half-timbering on the walls, good plasterwork decoration in the frieze area and a fine bar back (minus the lower shelves). The counter is also original though the leatherette panels on the front are from the 1960s/70s, as is the top - it has also been re-positioned further back. To the left, what is now a pool room also has half-timbering but has lost its fireplace. The lounge on the right was altered in the 1970s either by knocking two rooms together or extending the original and most of the fittings are from this time (though more half-timbering survives). The colourful stained and leaded exterior windows throughout are a delight and two feature the Lacons falcon.



Main Bar

Heydon

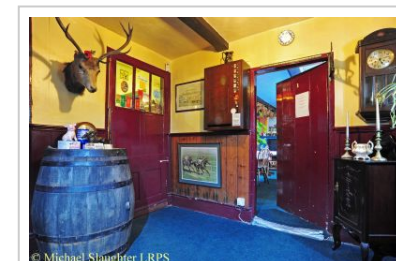
The Green, Heydon, NR11 6AD
Tel: (01263) 587391
Email: theearlearms@gmail.com
Website: <https://www.theearlearms.com/>
Real Ale & Cider: Real Ale and Real Cider
Listed Status: II

Kenninghall

East Church Street, Kenninghall, NR16 2EP
Directions: Opp Parish church
Tel: (01953) 887849
Email: theredlionltd@aol.com
Website: <http://redlionkenninghall.co.uk>
Real Ale & Cider: Real Ale
Listed Status: II

Earle Arms ★

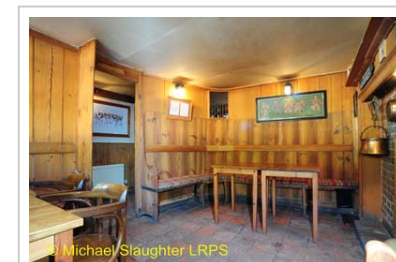
An 18th century pub in an estate village. A large entrancelobby with old panelled dado leads to the former public bar,now a dining room. It has the same dado panelling, an oldbrick fireplace with curious old cupboards on each side and acounter which is more like a hatch with no dispensers - thehandpumps are next to the old bar-back shelving. Left of thelobby is the current bar, once the lounge, with '2' on the door (unusually, on both sides), a pamment floor and an old brick fireplace; the brick bar dates only from 2006. A further room at the back brought into pub use has a 1950s fireplace and a bench.



Hallway

Red Lion ★★

The snug, to the right of the entrance, is one of Norfolk's finest old pub rooms and creates a wonderful, intimate drinking space. It has curved partition walling formed by high-backed settle seating. Until recently the timbers were painted white but, unfortunately, have been stripped by rather savage blasting. The metal grille on the corner is a modern insertion, presumably to aid supervision. More curious is the little, rectangular, hinged opening over the doorway for which no logical explanation has been put forward. The floor of the corridor and snug are laid with traditional large Norfolk terracotta tiles known as pamments. The pub is a remarkable survival, having been shut for seven years until 1997. Many of the fittings in the public bar and restaurant area date from that time.



Snug

Larling

, Larling, NR16 2QU

Directions: 1 mile SW from Snetterton racetrack, just off A11

Tel: (01953) 717963

Website: <http://angel-larling.co.uk>

Real Ale & Cider: Real Ale and Real Cider

Public Transport: Near Railway Station (Harling Road)

Listed Status: II

Norwich

17 Bishopgate, Norwich, NR3 1RZ

Directions: Behind Anglican Cathedral, near the Law Courts.

Tel: (01603) 667423

Email: theadamandeve@hotmail.com

Real Ale & Cider: Real Ale

Public Transport: Near Railway Station (Norwich) and Bus Stop

Listed Status: II

Angel ★

This now bypassed pub retains many fittings from an inter-war refurbishment in two of its four rooms. The 1930s bar back has some modern additions, the bar counter was replaced in 1983 and the 1930s brick fireplace was increased in size. The lounge retains its 1930s wood panelled walls, bar back, slatted bar counter and fixed seating. The two small rear rooms have been brought into use more recently and have no old fittings. The Angel sells 100 malt whiskies and holds its own beer festival in August.

Adam & Eve ★

A 17th century brick and flint building which has been a pub for some time. The front door leads into the top bar with two low old settles attached to the ceiling. This small quarry tiled room has some old dado panelling, but the bar counter and bar back are new. It seems to have been subdivided as the floor markings indicate the position of more partitions in the past. The most intact part of the pub is the small snug situated in an 1930s extension. It retains its parquet floor, period brick fireplace and fixed seating but the dado panelling is new. The lower bar was created in 1973 from the former cellar and also has modern fittings.



Public Bar



Top Bar

Norwich

174 Ber Street, Norwich, NR1 3EN

Tel: (01603) 620623

Public Transport: Near Railway Station (Norwich)

Listed Status: Not listed

Norwich

57 Colegate, Norwich, NR3 1DD

Tel: (01603) 632447

Email: hello@goldenstarnorwich.co.uk

Website: <https://goldenstarnorwich.co.uk>

Real Ale & Cider: Real Ale

Public Transport: Near Railway Station (Norwich) and Bus Stop

Listed Status: II

Norwich

20 Tombland, Norwich, NR3 1LB

Tel: (01603) 209955

Email: gm@maidsheadhotel.co.uk

Website: <https://www.maidshheadhotel.co.uk/>

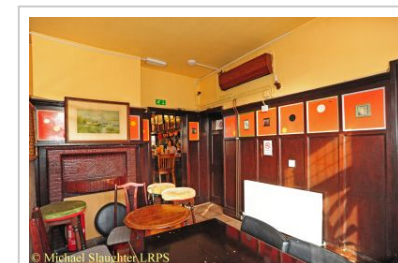
Real Ale & Cider: Real Ale

Public Transport: Near Railway Station (Norwich) and Bus Stop

Listed Status: II

Berstrete Gates ★

Refitted in the 1930s (when the flat roof extension was added), this pub retains three rooms and plenty of inter-war fittings. The main bar sports fielded panelling, brick fireplace, leaded windows and a 1930s panelled counter; the bar back is no doubt from the same era but has some modern items such as the small glass pieces from the 1960s (or later). It has, though, been enlarged in recent years by incorporating a lobby area. On the right, a splendid small snug has more oak panels on the walls and a 1930s brick fireplace. The small dining room on the rear left has a 1930s wood surround fireplace with new tiles and is served by a hatch/doorway. The inn sign, a mural by local artist John Moray Smith, is worthy of note.



Smoke Room

Golden Star ★

A pub since the 19th century though the building is older. Much alteration took place in 1984 but some older features clung on - notably the bar counter, wall panelling and some of the fixed seating in the main bar. The back area accommodated the Golden Star brewery until 1984.



Counter

Maids Head Hotel ★

The must-see here is the delightful two-doored, wood-panelled snug next to the main bar. It has a service hatch (usually kept open) with a part-glazed screen, an old fireplace with Delft tiles, bell pushes, a tiny old letter-box and fitted wall cabinets. The main bar has some inter-war fittings but the counter and bar back are recent. Seek out the Norwich Panorama by John Moray Smith.



Bar

Norwich

144 Magdalen Road, Norwich, NR3 4BA

Tel: (01603) 425482

Email: enquiries@whalebonefreehouse.co.uk

Website: <https://www.whalebonefreehouse.co.uk/>

Real Ale & Cider: Real Ale

Public Transport: Near Bus Stop

Listed Status: Not listed

Snettisham

Old Church Road, Snettisham, PE31 7LX

Directions: Off B1440

Tel: (01485) 541382

Email: info@roseandcrownsnettisham.co.uk

Website: <http://roseandcrownsnettisham.co.uk>

Real Ale & Cider: Real Ale

Public Transport: Near Bus Stop

Listed Status: II

Whalebone ★

The Whalebone is included primarily for its splendid original and rare bar back. It advertises 'Bullard & Son', 'Ales' and 'Stout' in narrow mirrored panels along the top and also has four narrow vertical mirror panels. Other original features are the bar counter (but with a new top) and the red and black diamond quarry-tiled floor in the entrance area. The small room to the right of the bar is also part of the original 1878-80 building.



Bar

Rose & Crown ★

The best part of this early 17th-century village inn is the small beamed front bar with its uneven pavement and brick floor. It has an ancient high-backed settle, very old fixed seating and a large brick inglenook fireplace with side oven. The bar counter, from old wooden vessels, has also been there some time. To the left, a small bar has an old fireplace but somewhat newer counter and seating. The small dining room far left has come into pub use more recently. A tiled passage leads to the bare-boarded rear bar with splendid old brick fireplace and whose panelled counter looks inter-war. About 30 years ago the pub was greatly extended to create dining spaces but none of this work impinged adversely on the historic core.



Front Bar

South Wootton

Nursery Lane, South Wootton, PE30 3NG

Tel: (01553) 672084

Website: <http://www.swaninnsouthwootton.co.uk>

Real Ale & Cider: Real Ale

Listed Status: Not listed

Thorpe St. Andrew

88 Gordon Avenue, Thorpe St. Andrew, NR7 0DR

Tel: (01603) 300901

Real Ale & Cider: Real Ale

Public Transport: Near Bus Stop

Listed Status: Not listed

Swan Inn ★

This brick and Norfolk carrstone building was purchased by Steward & Patteson in 1929 who shortly afterwards refitted and extended it. The public bar on the left has a bare woodfloor, a sloping bar counter that looks very 1930s but may be a replacement, a bar-back mixing 1930s and more recent work, and inter-war bench seating and brick fireplace. A dado of 1930s panelling is painted cream where a section of the bench seating has been removed. The lounge on the right is completely covered in 1930s wall panelling which indicates the room has been this size since that time. The bar-back is the original with a mirrored back, as is the counter. Also of note are the fielded panelled door with a glazed panel in the top, a good high-backed bench as you enter and seating probably from the 1930s. A 1960s looking fireplace on the far right has a built-in clock above it. An off-sales hatch between the two rooms has been lost.



Extension Room

Gordon ★

A mock-Tudor pub built by Bullards in 1934 and allegedly incorporating some reclaimed doors and windows from the old City Hall. The three original rooms still exist but gaps were cut into the dividing walls in the 1970s and, on the far left, a former private room has come into pub use. The left hand bar could well have been extended into the former off-sales - it has a bare brick dado, replacement curved brick counter and impressive fireplace. A colourful decorative plaster frieze runs round the room. The main bar has a similar brick counter and plaster frieze plus some fielded panelling within the servery but the bar back is mostly modern. A wide gap leads to the right hand room with another curved counter and brick dado and, once again, a floral-design frieze round the walls.



Main Bar

Wymondham

6 Church Street, Wymondham, NR18 0PH

Tel: (01953) 607907

Real Ale & Cider: Real Ale

Public Transport: Near Railway Station (Wymondham) and Bus Stop

Listed Status: II*

Green Dragon ★★

The Green Dragon occupies a mid 15th-century timber-framed building with flint and brick built to a standard hall-house plan. Up until 1993, it had one of the most impressive historic interiors in the whole of Norfolk and even today it is of significant interest. The front door leads into a passage and at the rear is the distinct layout of a room split in two by a wooden partition forming settle seating. The tiny snug with a red quarry-tiled floor has an inglenook fireplace. Hundreds of such snugs once existed but the opening-up of the vast majority to create one large room makes this one a remarkable survivor. Here the partition survives to the left and right but the central section which reached the ceiling was ripped out in 1993. A bench was added in 2004 across the missing section so there is once again a tiny gap into the snug similar to how it used to be. The fireplace is a massive 1930s brick example but the carved mantelpiece looks older and the latticed glass panels in the partition are no doubt 1930s additions. The bar itself used to be much smaller. The lounge at the front is now more of a dining room and was originally a shop; it also has a 1930s fireplace and service via a tiny hatch. A further small room is a recent addition.



Suffolk

Brent Eleigh

Lavenham Rd (A1141), Brent Eleigh, CO10 9PB

Tel: (01787) 247371

Real Ale & Cider: Real Ale and Real Cider

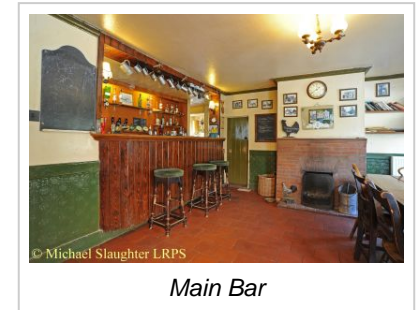
Public Transport: Near Bus Stop

Listed Status: II

Cock ★★★

A lovely old thatched building, whose interior is packed with historic features, the small 'old bar' on the right being especially cherishable. A 1989 book called *The Perfect Pub*, opined that this was it.

The building itself is probably 18th-century, although the timber-framing behind the rendering may be older. The smaller bar on the right has wooden panelling in the dado, an old bar counter and shelves, complete with a drawer by way of a till. The quarry-tiled floor, tongue-and-groove panelled ceiling, old fireplace (but modern brick hearth surround) and bare wall benches all add to the atmosphere. The larger room on the left saw some changes in 1976. The servery was created by cutting back the off-sales area by several feet and opening a counter: However, the off-sales hatch was repositioned and the outside door still survives on the side of the pub. Note the hole in one bench for the now rare pub game of pitch penny. On the big table you can make out two scratched shove ha'peny boards (that nearest the door has beds that look more suitable for farthings than ha'pennies!).



Bungay

29 Broad Street, Bungay, NR35 1EF

Tel: (01986) 892681

Email: info@greendragonbungay.co.uk

Website: <http://www.greendragonbungay.co.uk>

Real Ale & Cider: Real Ale

Public Transport: Near Bus Stop

Listed Status: Not listed

Bury St. Edmunds

17 The Traverse, Bury St. Edmunds, IP33 1BJ

Tel: (01284) 764867

Email: info@thenutshellpub.co.uk

Website: <http://www.thenutshellpub.co.uk/>

Real Ale & Cider: Real Ale

Public Transport: Near Railway Station (Bury St Edmunds)

Listed Status: II

Green Dragon ★

Late Victorian pub refitted in the 1930s, with the layout from that time still clearly visible. The quarry-tiled Bar retains its inter-war counter, bar-back and fixed seating in the bay window. The Smoke Room also has its 1930s counter though, as in the Bar, it has been re-fronted, albeit in sympathetic style. The bar-back and wood-surround fireplace are of similar vintage. A third room on the right has come into use more recently. The door on the left-hand side of the pub led to an off-sales through a door on the right but this is no longer open. The pub brews its own beers.



Bar

Nutshell ★★★

Long claimed to be the UK's smallest pub, this extraordinary establishment has a fascinating history

The Nutshell is thought to have opened as a beerhouse in 1873, having previously been used by newspaper vendors. With an interior measuring just 4.6m by 2.5m, it has long been the most authentic claimant to be the UK's smallest pub, although the rise of micropubs has put this title at risk. Inside the shop-like interior are an old counter and bar-back plus seating on bare benches attached to an old panelled dado, painted brown. As far back as 1884 the pub made much of its collection of curiosities and some still adorn this tiny establishment, not least a 400-year old mummified cat found behind the fireplace in 1935. The record number of people to have been squeezed inside is claimed to be 102 plus a dog called Blob. An outside seating area with table service has recently been installed and when this is operating you cannot sit inside the pub, although the large windows enable you to see into the whole interior.



Interior

Bury St. Edmunds

48 Whiting St, Bury St. Edmunds, IP33 1NP

Directions: On the corner of Whiting Street and Westgate

Tel: (01284) 361336

Real Ale & Cider: Real Ale

Public Transport: Near Railway Station (Bury St Edmunds) and Bus Stop

Listed Status: II

Ipswich

470 Nacton Rd, Ipswich, IP3 9NF

Tel: (01473) 724025

Real Ale & Cider: Real Ale

Public Transport: Near Railway Station (Derby Road) and Bus Stop

Listed Status: II

Rose & Crown ★★

A pub since at least 1913, it retains the original two bars plus off-sales floor plan, though there were extensions and alterations in the mid-1970s. The public bar counter is a good 70 years old as are the bar back shelving and part-panelled walls with benches attached. The saloon bar has more tongue-and-groove panelling plus another old counter and a mirrored bar back. The illuminated display case on the left used to be a door to the gents. In between these rooms, the off-sales is a historic item - a tiny, narrow room, more like a passage and with an old counter and part-mirrored bar back. It's used mainly for confectionery sales but the occasional jug is still filled with cask ale.

Golden Hind ★

One of a number of huge mock-Baronial estate pubs built by Tolly Cobbold in the 1930s and nicknamed 'Tolly Follies'. Although heavily refurbished in recent times, some of the grandeur survives, such as the imposing lantern skylight, the staircase to the function room and some oak panelling in the former Oak Room.



Public Bar



Left Hand Bar

Ipswich

Cliff Lane, Ipswich, IP3 0PQ

Tel: (01473) 252450

Real Ale & Cider: Real Ale

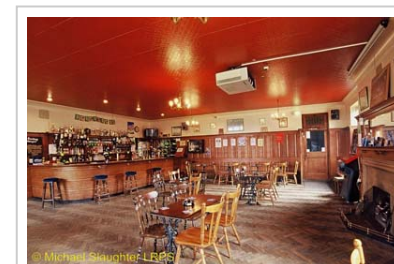
Public Transport: Near Railway Station (Derby Road (Ipswich))
and Bus Stop

Listed Status: II*

Margaret Catchpole ★★★

Arguably the finest surviving 1930s pub in all England, displaying a glorious combination of quality and intactness (and listed at Grade II* as a consequence)

Built in 1936 for a housing estate, this precious survival embodies all that inter-war pub builders sought to achieve – refined architecture, high-quality restrained furnishings, and community facilities (in this case a still well-used bowling green, though it no longer forms part of the pub estate). The large sweeping roofs, prominent dormers and tall chimneystacks draw on vernacular traditions. Inside are three unaltered rooms plus an off-sales (intact but used for storage). The spacious public bar has parquet flooring, a solid curved counter, fine stone fireplace, lots of panelling and a bay window looking out to the bowling green. The only change is a 1970s link to the gents', formerly outside. A small, panelled saloon (right) has its own quadrant-shaped bar counter but is only open for meetings and functions: it has bell-pushes (one still working) and another polished stone fireplace. An annunciator box still shows the names of the rooms requiring service. The lounge (rear) also has a curved counter and a bar-back with original cupboard and drawers, along with a wood-block floor, panelled walls, original fireplace in an alcove and more bell-pushes. Margaret Catchpole (1769–1819) was a horse-stealer and gaol-breaker who ended up being transported to Australia – a true Suffolk heroine!



Public Bar

Ipswich

1 Tuddenham Rd, Ipswich, IP4 2SH

Tel: (01473) 215862

Website: <http://www.woolpack-ipswich.co.uk/>

Real Ale & Cider: Real Ale

Public Transport: Near Railway Station (Ipswich, Westerfield)
and Bus Stop

Listed Status: II

Woolpack ★

Splendid four roomed pub with an 18th century brick front to an earlier building. The tiny snug at the front could originally have been an off-sales; it has a counter at least 50 years old and tongue and groove panelling with a bare bench attached, but the bar back shelves are modern. The lounge on the left (originally the 'Public Parlour') has a fine brick fireplace, painted wainscoting and a counter from (probably) the 1970s. A passage leads to two small rooms on the right, the first one of which was brought into use in more recent times and has since been more than doubled in size. The counter in the attractively simple front room is a period-style replacement.



Right Hand Room

Laxfield

Gorams Mill Lane, Laxfield, IP13 8DW

Directions: Pub can be difficult to find - so just walk through the pretty churchyard and exit via lower street gate, the pub is on your right.

Tel: (01986) 798395

Email: thelowhouselaxfield@gmail.com

Website: <https://lowhouselaxfield.com>

Real Ale & Cider: Real Ale

Public Transport: Near Bus Stop

Listed Status: II

Long Melford

Hall St, Long Melford, CO10 9JG

Tel: (01787) 378494

Website: <https://www.greenekinginns.co.uk/hotels/bull-hotel-sudbury/>

Real Ale & Cider: Real Ale

Public Transport: Near Bus Stop

Listed Status: II*

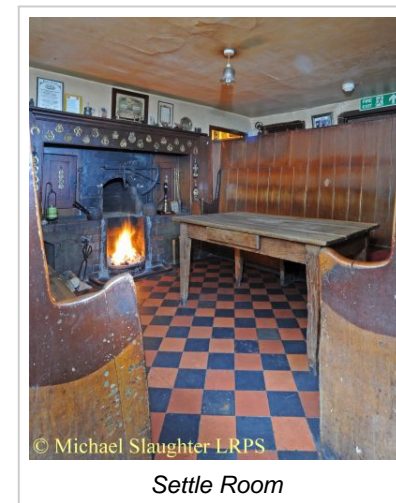
King's Head ★★★

A superlative, unspoilt village pub featuring a most remarkable public bar, unchanged for 150 years, and also one of only six traditional pubs in the UK with no bar counter.

The building was started in the 16th century and extended to the left in the 18th. Its unspoilt nature results from its being run by the Felgate family from 1882 to 1979. The front doorway leads into the public bar which is dominated by high settles on three sides, the backs of which define a corridor running round the room – a rare, historic arrangement paralleled at the North Star, Steventon, Oxon. The settles face a fireplace, at the sides of which are cupboards for keeping items dry. It has a quarry tiled floor which extends through the corridor and into a room on the right. Behind this, the corridor continues towards the rear via a further opened out space on the right. Facing this is a large multi-drawer cupboard. Finally, at the back, we reach the servery, which is in fact also the cellar and has no counter – beer is served direct from casks on the stillage. The dining room in the left-hand portion came into public use relatively recently. Since 2018 it has been owned by The Low House Community Interest Company (CIC), a group of regulars who clubbed together to buy the freehold.

Bull ★

An inn since 1580, the Bull has been much restored and altered, most recently in the early 1960s when much of the interior was reconfigured. In the main bar (formerly the residents' lounge) an impressive counter with fielded panelling and a large bar back were installed, the latter with a counter/hatch to the lounge. That room was once the public bar and is notable for its deeply moulded oak beams - look out for the carving of a 'Wildman' or 'Woodwose'. To the right of the flagstoned entrance passage is the dining room with more oak beams. All three rooms have superb old brick fireplaces, that in the dining room being especially magnificent - twelve feet wide and spanned by a massive carved oak mantle beam.



Settle Room

Orford

Quay Street, Orford, IP12 2NU
Tel: (01394) 450243
Email: info@jollysailororford.co.uk
Website: <https://www.jollysailororford.co.uk>
Real Ale & Cider: Real Ale
Listed Status: II

Pin Mill

Pin Mill Rd, Pin Mill, IP9 1JW
Tel: (01473) 780764
Email: buttandoyster@debeninns.co.uk
Website: <http://www.debeninns.co.uk/buttandoyster/>
Real Ale & Cider: Real Ale
Public Transport: Near Bus Stop
Listed Status: II

Jolly Sailor ★

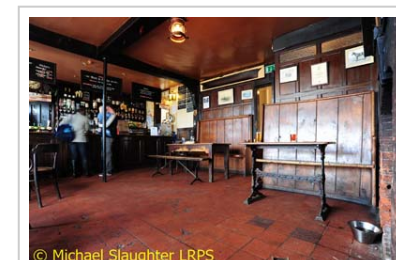
The sea has long deserted the quayside but an authentic nautical atmosphere lingers at this 17th century pub formed from two houses. Steps lead down to a simply furnished but superb main bar with low ceiling, flagstone floor and an aged scrubbed table. The bar counter is at least 70 years old as the photos in the snug show; the tongue and groove panelling and some of the bar back shelves attached could be of similar date. To the right past an ancient spiral staircase is the cracking little snug; one panelled wall looks post war. The dining room to the left has an impressive fireplace but almost certainly represents an extension into an adjoining property, as does the room behind it. The rear entrance accesses an off-sales hatch to the back of the bar but this is no longer in use. Alongside it is the small bare-boarded former 'Chart Room', now an office.



Public Bar

Butt & Oyster ★★

The pub occupies a 17th-century building which was enlarged both in the 19th century and again in 1932. The public bar, overlooking the water and with its red floor tiles and high-backed settles is especially attractive, containing some 17th-century fielded panelling and an early 20th-century brick fireplace. The counter was moved back some 18 inches in 1988: it is hard to date but may be of inter-war vintage, along with the shelves at the back. Also enjoying fine views across the river is the dining room, doubled in size in 1932 but with a section of raised floor from 1997, when the panelling and seating in this area were renewed. Across the quarry-tiled corridor, which runs through the building is a small smoke room: over the brick fireplace is a 17th-century carved panel with naively treated figures and contemporary ornamentation. Casks are stillaged within the servery.



Public Bar

Rumburgh

Mill Rd, Rumburgh, IP19 0NT
Tel: (01986) 785257
Email: info@rumburghbuck.co.uk
Website: <http://www.rumburghbuck.co.uk>
Real Ale & Cider: Real Ale and Real Cider
Listed Status: Not listed

Shotley

The St (B1456), Shotley, IP9 1NL
Tel: (01473) 787237
Real Ale & Cider: Real Ale
Public Transport: Near Bus Stop
Listed Status: Not listed

Buck ★

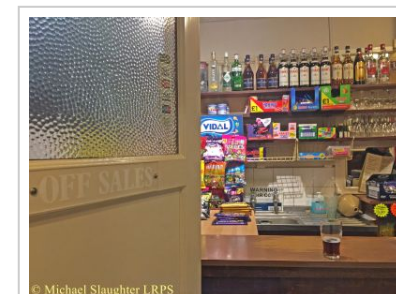
An excellent example of how to expand a pub's trading area by sympathetically creating new separate rooms. Before 1982 the only public rooms were the public bar and the little used 'Men's Kitchen' behind. The bar retains its old counter front (new top), old basic red painted bar back shelves, red painted partition, bare wall bench seating attached to tongue and groove dado panelled walls and a brick floor. A wall to the left of the bar was removed in 1982 and the licensee's private room on a lower level converted to a small quarry tiled floored area with a new small counter and wall bench seating / panelling added to match that in the original part. The games room beyond was originally a stable/barn. Behind the bar the flagstone floored former Men's Kitchen never had a bar until 1982. A photograph in the pub shows two large settles in this room which were removed by Adnams before they sold the pub in the 1980s. It retains tongue and groove panelling on walls and ceiling. At the rear is a small 'Garden Room' built on in the early 1990s. The dining room on the far right was a store room.



Front Bar

Rose ★

A delightful no-nonsense village local where much survives from a 1960s makeover. Ahead of the left-hand door is a further door behind which is an off-sales, known as 'the slip', and which is still in regular use selling drinks, sweets and even some toys. The public bar on the right has a sloping 1960s ply panelled counter with a formica top and shelving of the same vintage behind. The lounge is accessed from the right-hand door and passage. The counter is also from the 1960s scheme but has a new top and plain frontage - the bar back has not been changed. Around 2014 the room was extended to nearly three times its size.



Off Sales

Snape

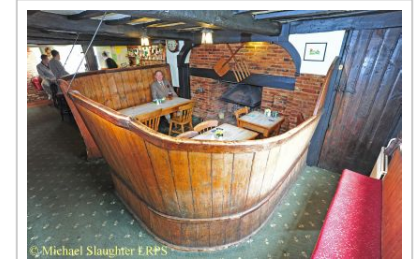
Bridge Rd, Snape, IP17 1SL
Tel: (01728) 689112
Email: thecrowninnatsnape@gmail.com
Website: <https://thecrowninnatsnape.co.uk/>
Real Ale & Cider: Real Ale
Public Transport: Near Bus Stop
Listed Status: II

Southwold

High St, Southwold, IP18 6DP
Tel: (01502) 722275
Email: thecrown@adnams.co.uk
Website: <https://www.thecrownsouthwold.co.uk/>
Real Ale & Cider: Real Ale
Public Transport: Near Bus Stop
Listed Status: II

Crown ★★

This 17th century pub is well worth a visit to see the wonderful snug created by two large curved settles around a large old brick fireplace, all of which could be as much as 200 years old. The settles are held in place by iron stays attached to the beamed ceiling. An uneven brick floor passageway runs from the front door and to the left is a room with a herringbone brick floor. Situated beyond the snug, the modern bar fittings include a bar-back with linen-fold panelling from the Dorchester in London; this was installed in a refit in the 1990s and involved moving the bar counter through 90 degrees. The bar has since been moved again following flooding in Winter 2013. The farm attached to the pub has won many awards for its pigs and sheep.



Snug

Crown ★

Included here for the cosy 'Back Bar' nicknamed "God's Waiting Room". Situated off the rear tiled corridor, this small room is formed by a curved glazed partition wall to which bar back fittings are attached. The dado panelled walls with plain wood above and bar counter suggest that this room was last refitted in the 1930s. Red leatherette wall benches. It is good to see that such a traditional bar has been left intact in an otherwise modernised hotel.



Back Bar

Walberswick

Ferry Rd, Walberswick, IP18 6TN

Tel: (01502) 723109

Email: bellwalberswick@adnams.co.uk

Website: <http://www.bellinnwalberswick.co.uk/>

Real Ale & Cider: Real Ale

Listed Status: II

Bell Inn ★

The highlight of this characterful 17th century village pub is the room at the front-left with its uneven flagstone floor, superb curved L-shaped high backed settle and smaller settle in front of the old brick fireplace. The window bench seating is also old. The front-right quarry-tiled room has another old brick fireplace with copper hood and old window bench seating. Originally it was accessed via a door on the right as you enter the pub. The bar counter dates only from 1996. Two tiny rooms can be found off the passage around the settles - the one at the front was an office in the 1930s, while the one at the rear on a lower level was originally the cellar. A modern bar is at the rear with a new dining room on the far left. You can reach the pub from Southwold Harbour by using one of the few remaining hand operated ferry services; it operates daily in summer and at weekends in the low season.



Snug

Closed Pubs

The following pubs would have been main entries in this guide had they currently been open

Essex

Grays

Kings Walk / Argent Street (formerly 168 High Street), , Grays, RM17 6HR

Directions: 5 to 7 minutes walk from Grays rail & bus stations, southwards down the High Street, it is on the right at the junction with Argent Street

Tel: None

Real Ale & Cider: Real Ale

Public Transport: Near Railway Station (Grays) and Bus Stop

Listed Status: II

White Hart ★★

UPDATE MAY 2024

The pub closed in controversial circumstances in May 2023. Owners Admiral Taverns originally sought new tenants but now have the freehold on the market (and it is currently 'Under Offer')

Once an old weather-boarded pub, rebuilt by Charringtons in the 1930s and retaining clear evidence of the original floorplan and many original fittings. The star here is the fine long oak bar back fitting in classic 1930s style which served the five rooms and off sales. The main entrance has been blocked up but would have led to the off-sales - now used for storage. The two left-hand rooms have their attractive original counters. Most of the wall between the two right-hand rooms has been taken down, but again the counter survives as do the fireplaces, albeit boarded over and painted. The Club Room is still used for functions and has some old features including a dumb waiter. Access to these last three rooms was originally by the right-hand passage into the pub which retains its 1930s tiled dado.



Exterior

South Weald

Weald Road, , South Weald, CM14 5QJ

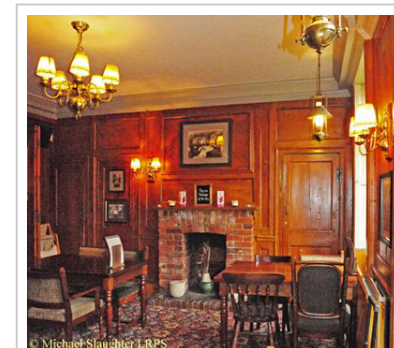
Tel: (01277) 210266

Real Ale & Cider: Real Ale

Listed Status: II

Tower Arms ★

A fine red-brick building dated 1704 and a pub since 1921. The central passage has original full-height panelling, a counter probably from the 1921 conversion and the original service bells. A counter of similar origin adorns the the main bar on the left, where two rooms have been knocked together. The rear area has plain matchboard dado panelling and a tiny hatch can be found in what remains of the dividing wall. The two rooms on the right also have full-height panelling and are linked by a modern folding partition. The emblem of the Tower family, owners of nearby Weald Hall, is over the front doorway.



Right Hand Room

Hertfordshire

Ware

12, Crib Street, , Ware, SG12 9EX

Tel: (01920) 421007

Real Ale & Cider: Real Ale

Public Transport: Near Railway Station (Ware) and Bus Stop

Listed Status: II

Albion ★

A very old timber-framed building that has been a pub since at least 1845. Now a cosy one-roomed local, it appears little changed since the 1950s. The brick and timber built counter is certainly a period piece as are the two fireplaces. Note the glazed leaded spirit cupboards each end of the bar-back. The central ceiling beam is supposedly from the warship after which the pub is named.



Servery

Norfolk

Great Yarmouth

196/197 Northgate Street, , Great Yarmouth, NR30 1DB
Tel: (01493) 844374
Real Ale & Cider: Real Ale
Public Transport: Near Railway Station (Great Yarmouth)
Listed Status: Not listed

North Wootton

Ling Common Road, , North Wootton, PE30 3RE
Tel: (01553) 631323
Real Ale & Cider: Real Ale
Public Transport: Near Bus Stop
Listed Status: Not listed

Coach & Horses ★

Although built around 1850, the glazed brick frontage here is early 20th century and the top storey is a post-war replacement following bomb damage. Star attraction is the small room rear left with its fielded panelled walls to picture frame height, a hatch for service and a bar-back (probably from 1958) decorated with small pieces of glass. The L-shape of the bar betrays the removal of the off-sales shop whose door is still visible outside. The bar counter is old (with front panels added some 30 years ago) and the bar-back, dado panelling and fixed seating all date back at least 50 years. A hole was cut in the wall between the lounge and former off-sales when the latter was combined with the public bar. Pity that much of the woodwork has been painted over.



House on the Green ★

Rebuilt in 1948-50 and not much altered since. The left-hand room retains its classic 1950s counter with Formica top and the bar back with its mix of glass and Formica shelves looks to be the same vintage, as does the brick fireplace and fixed seating. Note the 'Cloakrooms' sign gold-painted on the back door, which has been reversed, and the sliding door to the servery. The lounge has a forward-leaning counter which is redolent of the 1950s albeit the front panels are later. The bar back fitting has a mirrored backing but the top shelves are recent. This room also has an original fireplace and bench seating. A widish arch leads to a room on the far right which looks to have come into pub use more recently. The former off-sales is near the entrance but the hatch is blocked up.



Suffolk

Flempton

The Green, , Flempton, IP28 6EL

Real Ale & Cider: Real Ale

Listed Status: II

Greyhound ★

UPDATE 2020.

Closed in 2016. Was put on the market - ACV activated but no bid made by locals. West Suffolk Council's ACV records show "No application to bid - property now to be sold on the open market without restriction."

It appears the property has been sold, There are no indications of the intention of new owners as no recent planning applications.

The description when it closed is shown below. The accompanying photographs show the interior as a pub.

Late 18th century village pub which was substantially altered around 1960, when a former cottage on the right was incorporated into the pub, but has changed little since. The present public bar (two small rooms prior to 1960) has a quarry tiled floor, bar counter, bar back with illuminated panel at the top and fireplace, all from the 1960s. The off sales hatch installed at that time is still there. The lounge has another 1960s bar back, but the curved bar counter is more modern. A small dining room beyond has a 1960s fireplace. On the left of the public bar is a separate pool room with a 1930/1950s brick fireplace and some 1960s seating moved from the bar.



Public Bar

